

THE TURTLE

Steady...Reliable...Precise...The best tool to finish the material handling “race”



The TURTLE moves and places heavy loads where a forklift, overhead hoist or mobile crane cannot reach.

THE TURTLE COMES IN FOUR WEIGHT CAPACITIES:

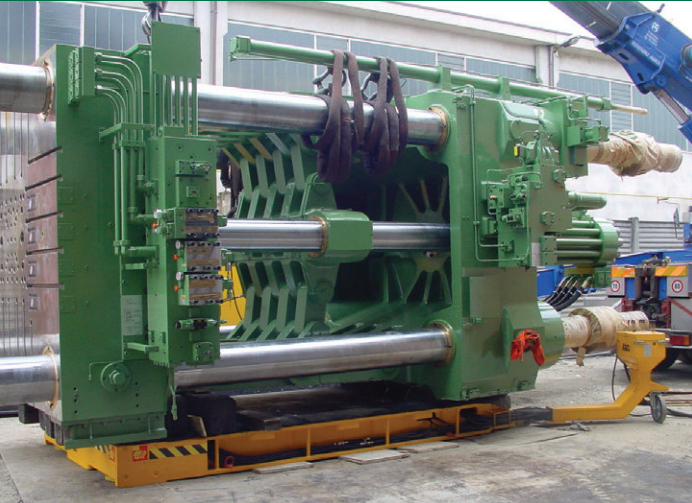
- 🐢 50 TON PAYLOAD CAPACITY
- 🐢 80 TON PAYLOAD CAPACITY
- 🐢 120 TON PAYLOAD CAPACITY
- 🐢 200 TON PAYLOAD CAPACITY

...and is easily transported; TURTLE fits on a standard flat bed or in a container.

The TURTLE can also ship with the payload because of its low weight and low profile.



The TURTLE uses three modes to move and position the payload:



1. THE TURTLE WALKS WITH MAXIMUM LOAD ON ANY FLOOR SURFACE

The step by step “walking mode” enables the TURTLE to move over any type of surface carrying the maximum payload (from 50 to 200 metric tons).

- 🐢 Concrete
- 🐢 Asphalt
- 🐢 Gravel
- 🐢 Hard floor
- 🐢 Slope, obstacle

During “walking mode” the TURTLE exerts EXTREMELY LOW GROUND PRESSURE which prevents floor damage and reduces the need for any floor preparation.

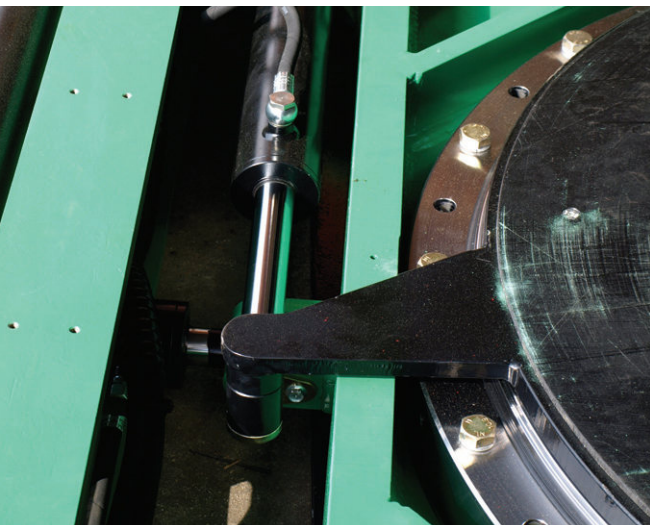
2. THE TURTLE ROLLS OVER HARD, FLAT SURFACES WITH MAXIMUM 25 TONS OF PAYLOAD...

In “rolling mode,” the TURTLE is equipped with retractable, driven wheels that allow the TURTLE to roll on hard and flat floors.

- 🐢 Max load (rolling mode) 25 tons
- 🐢 Front / rear drive
- 🐢 Integrated brake
- 🐢 1 or 2 driven wheels
- 🐢 Adjustable speed from 0 to 40 per minute

The rolling mode is ready at any time to transport loads up to 25 metric tons.



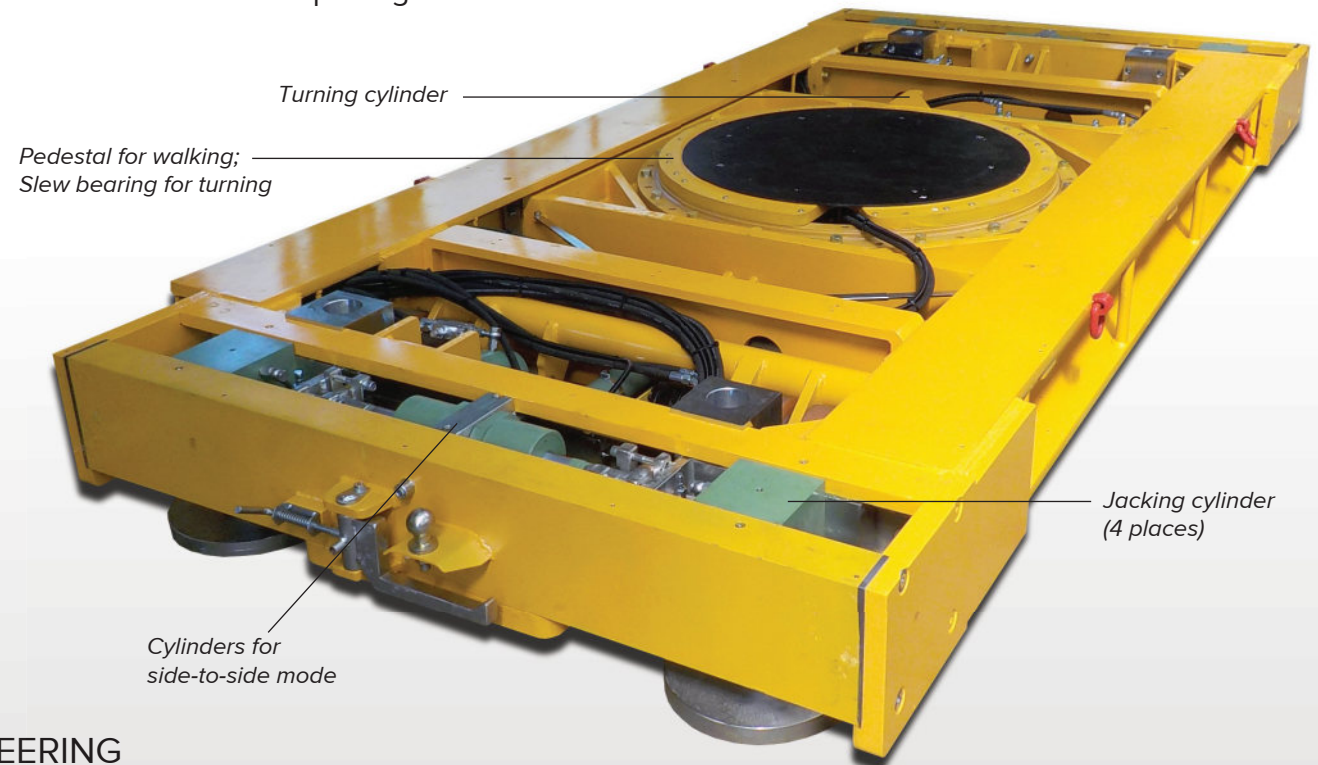


3. THE TURTLE WALKS SIDE-TO-SIDE (OPTIONAL FEATURE)

In the optional “lateral mode,” two double-acting hydraulic cylinders activate the transversal displacement of the jacking system along machined slides in the frame.

This setup enables the TURTLE to move laterally from right to left and from left to right.

This mode is ideal for realigning the load or to move it from one opening to another.



THE **TURTLE** INCLUDES BUILT-IN STEERING (from 0° to 360°)

The rotational steering of the TURTLE allows the platform to turn at any angle to its “in line” position.






The rotational movement is easily carried out in the rolling mode and the walking mode.

Steering is performed incrementally in steps from 0°-30°.

Maneuverable at any angle from 0°-360° on any type of ground surface with a high degree of precision.

JACKING SYSTEM INTEGRATED INTO THE TURTLE

The hydraulic cylinders at the four corners of the TURTLE allow various operations:

-  Jacking of the loads for wedging
-  Self-loading of the TURTLE and its load on a low bed trailer
-  Clearing of obstacles (such as doorsteps)
-  Load weighing (optional feature)
-  This feature is directly activated from the control board

HYDRAULIC POWER ENSURES FLEXIBLE, STEADY AND PRECISELY CONTROLLED POWER AND STEERING



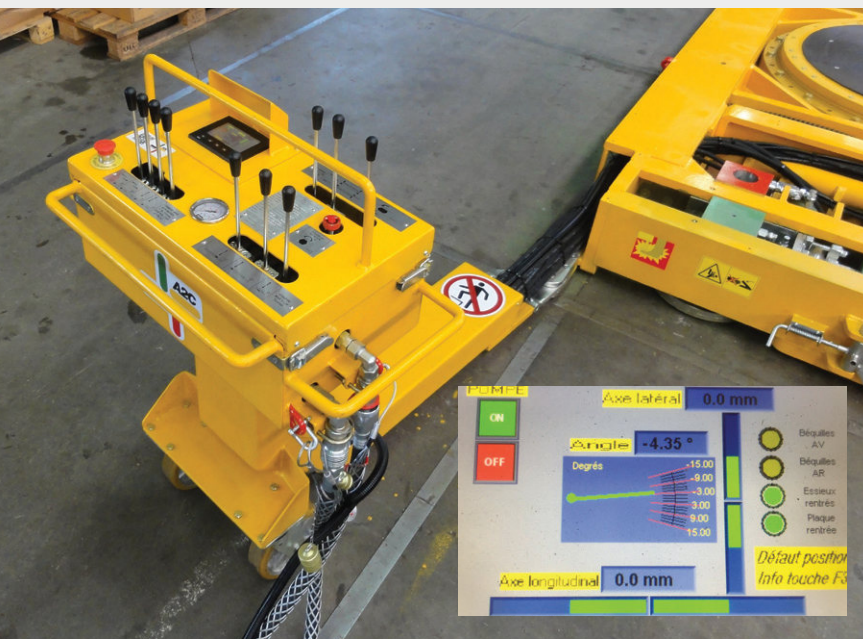
ELECTRICAL POWER UNIT

- Variable displacement pump
- Built-in function to switch between 2- or 3-phase power



DIESEL POWER UNIT

- Variable displacement pump
- Quiet liquid cooled engine
- Full instrumentation with electric starter



CONTROL BOARD and SYSTEM

- Angle for best viewpoint
- PLC Controlled
- All controls in one location
- Operation by joy stick; returns to off or neutral when released
- Connection to the power unit with flexible hoses and quick release couplings
- Commands are available in English



A VERSATILE, RELIABLE, QUICK AND SAFE MACHINE



The TURTLE is designed and produced to high standards and carries the CE mark of conformity with European regulations for machines.

Each TURTLE is covered by a 12-month warranty.

Exclusive North American Representative



+1 (321) 631-3803

peispecialized@precweb.com

Designed and manufactured by:



A2C – Le Dombier – France
01260 LE PETIT ABERGEMENT
Phone: (+33) 04 79 87 65 11
Fax : (+33) 04 79 87 65 82
Email: a2c@a2c-fr.com